

NEOS TECHNOLOGIES

A Gooch & Housego Company

MODEL NUMBER: **64040-75-.1-8CH-16MB**

SPECIFICATION DOCUMENT NUMBER: 56A7879J

Product Description:

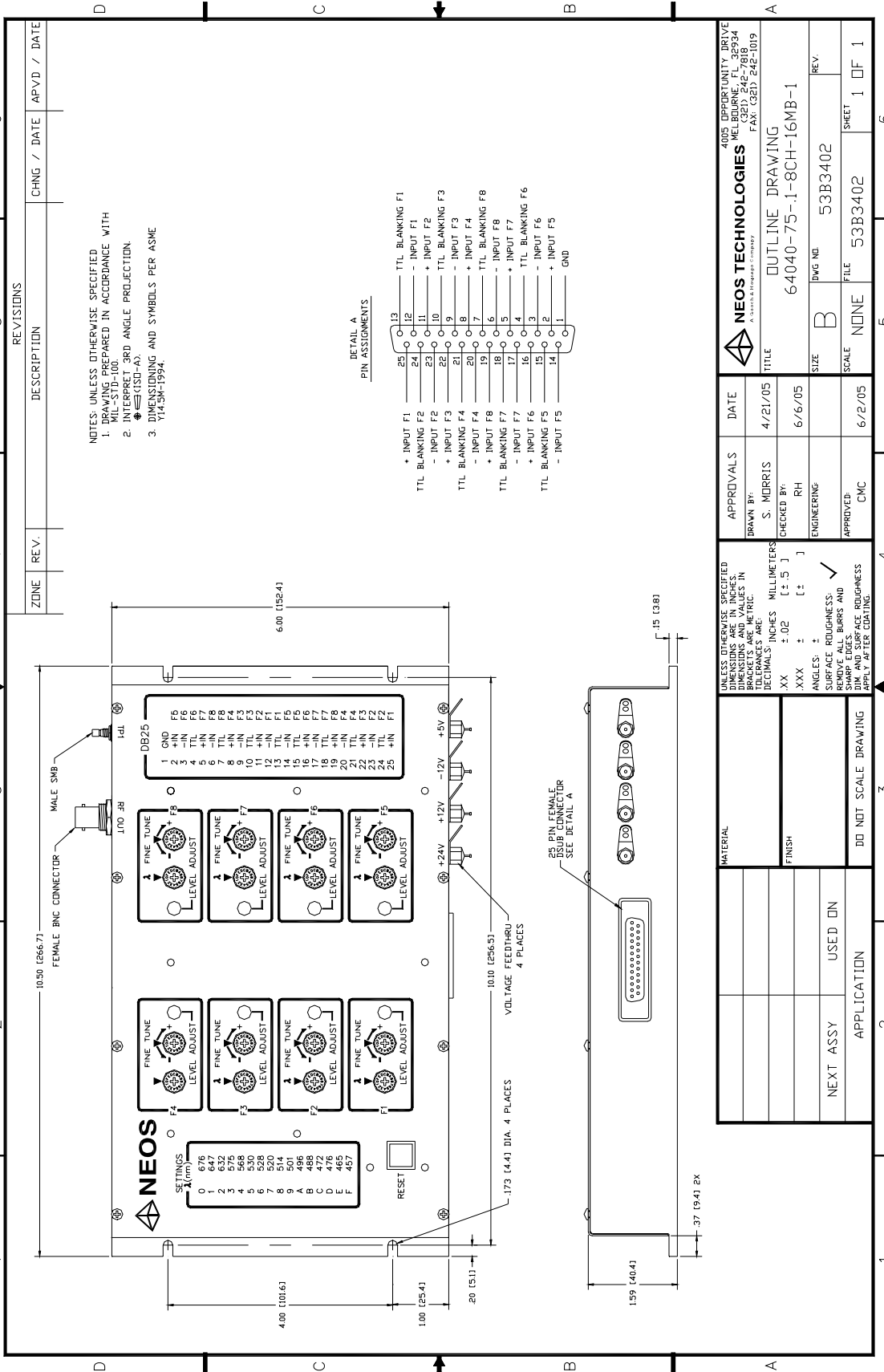
The 64040-75-.1-8CH-16MB is an eight channel, frequency synthesized driver for the **48062** series Poly-Chromatic Acousto Optic Modulator (PCAOM), which can modulate eight wavelengths of light at the same time. The driver has independent analog modulation and TTL blanking for each channel. The wavelengths for each channel are switch selectable from 16 standard wavelengths stored in an E-Prom (see page 3 lookup table). Other wavelengths can be custom factory programmed.

PARAMETER

SPECIFICATION

| | |
|-------------------------|-------------------------------------------------------------|
| Number of Channels | Eight |
| Frequency Stability | $\pm .01\%$ |
| Power Out | 50-200 mW |
| Wavelengths per Channel | 16 |
| Fine Tuning Range | + 56 KHz, - 64 KHz in 8 KHz Steps |
| Analog Inputs (8) | 0-5 Volts into 10K Ohms |
| Blanking Inputs (8) | TTL, 4.7K Ohms pull ups. No input or high is not blanked |
| Rise/Fall Time | 500 ns Max |
| Extinction Ratio | Analog > 60 dB TTL > 60 dB |
| Power: | +24, +12, -12, +5 Volts DC |
| Current: | 0.8, 0.8, 0.2, 1.8 Amps |
| Connectors: | |
| RF out: | BNC Female (mates with Amphenol P/N 69475) |
| Data in: | 25 Pin D-Sub Female (mates with Panduit P/N IDM25PH5) |
| TP1(-20dB) | SMB Male (mates with ITT Cannon P/N B51-007- 0000-220) |
| Outline Drawing: | 53B3402 |

OUTLINE DRAWING



| ZONE | REV. | DESCRIPTION | CHNG / DATE | APVD / DATE |
|------|------|-------------|-------------|-------------|
| 4 | | REVISIONS | | |

NOTES: UNLESS OTHERWISE SPECIFIED

- DRAWING TO BE PREPARED IN ACCORDANCE WITH INTERCONNECT BOARD ANGLE PROJECTION.
- INTERCONNECT BOARD ANGLE PROJECTION.
- DIMENSIONING AND SYMBOLS PER ASME Y14.3M-1994.

| | | | |
|---------------------------------------------------------------------------|---------|---------------------------------------------------------------------------------------------|-----------------|
| NEOS TECHNOLOGIES <small>A DIVISION OF FERRARIS COMPANY</small> | | 4005 OPPORTUNITY DRIVE MELBOURNE, FL 32934 TEL: (321) 242-1019 FAX: (321) 242-1019 | |
| APPROVALS | DATE | TITLE | REV. |
| DRAWN BY: S. MORRIS | 4/21/05 | OUTLINE DRAWING | |
| CHECKED BY: RH | 6/6/05 | 64040-75-1-8CH-16MB-1 | |
| ENGINEERING | | SIZE: B | DWG NO: 53B3402 |
| APPROVED: CMC | 6/2/05 | SCALE: NONE | FILE: 53B3402 |
| MATERIAL | | DO NOT SCALE DRAWING | |
| FINISH | | USED ON | |
| APPLICATION | | NEXT ASSY | |
| | | SHEET 1 OF 1 | |

SWITCH SETTINGS VS. WAVELENGTH FOR EACH CHANNEL
STANDARD WAVELENGTHS LOOKUP TABLE

| SWITCH POSITION | WAVELENGTH nm |
|-----------------|---------------|
| 0 | 676 |
| 1 | 647 |
| 2 | 632 |
| 3 | 575 |
| 4 | 568 |
| 5 | 530 |
| 6 | 528 |
| 7 | 520 |
| 8 | 514 |
| 9 | 501 |
| A | 496 |
| B | 488 |
| C | 476 |
| D | 472 |
| E | 465 |
| F | 457 |