

# NEOS TECHNOLOGIES

A Gooch & Housego Company

MODEL NUMBER:

## 21XXX-YYY-ZAMVCO

### SPECIFICATIONS

Document Number: **56A17599C**

The 21XXX-YYY-ZAMVCO is a variable frequency RF Driver with analog modulation input and a Z watt output into a 50 ohm load, supplied as a OEM module.

#### PARAMETER:

#### SPECIFICATION:

Output Frequency:

**XXX to YYY** MHz

Where XXX to YYY typically is less than an Octave bandwidth, with frequencies from 35 to 250 MHz .

Spurious Levels:

-45 dBc Maximum

Harmonic Distortion:

-15 dBc Maximum

Frequency Control Voltage:

2 to 15 volts Typical

Analog Input:

$\pm 1$  volt into 50 ohms, 0 volts = minimum RF output  
1 volt = maximum RF output

Extinction Ratio:

30 dB Minimum

RF Rise / Fall Time

20 ns Typically, 30 ns Maximum

P<sub>RF</sub>: 10 to 90 %

RF Output Power:

**Z** Watts - 1 to 2 watts Nominal - Adjustable  
Limited to < 1 watt output above 150 MHz.  
Factory set for optimum performance when paired with a NEOS AO Device.

Output Power Flatness:

1.5 dB Maximum

Output Impedance:

50 ohms Nominal

Supply Voltage:

+ 24 VDC + 0.5 VDC below 150 MHz

+ 28 VDC + 0.5 VDC above 150 MHz

Supply Current:

1.5 Amp Maximum

#### MAXIMUM RATINGS:

Supply Voltage:

+ 30 Volts

Power Output:

No DC Feedback Allowed

Case Temperature:

+ 55° C

The Driver must be attached to an adequate heatsink .

#### CONNECTORS & MECHANICAL:

RF Output Connector:

BNC Female

Modulation Input Connector:

BNC Female

Frequency Control Connection:

SMB Male

Power Supply Connections:

Vcc

Solder Pin

Return

Solder Lug

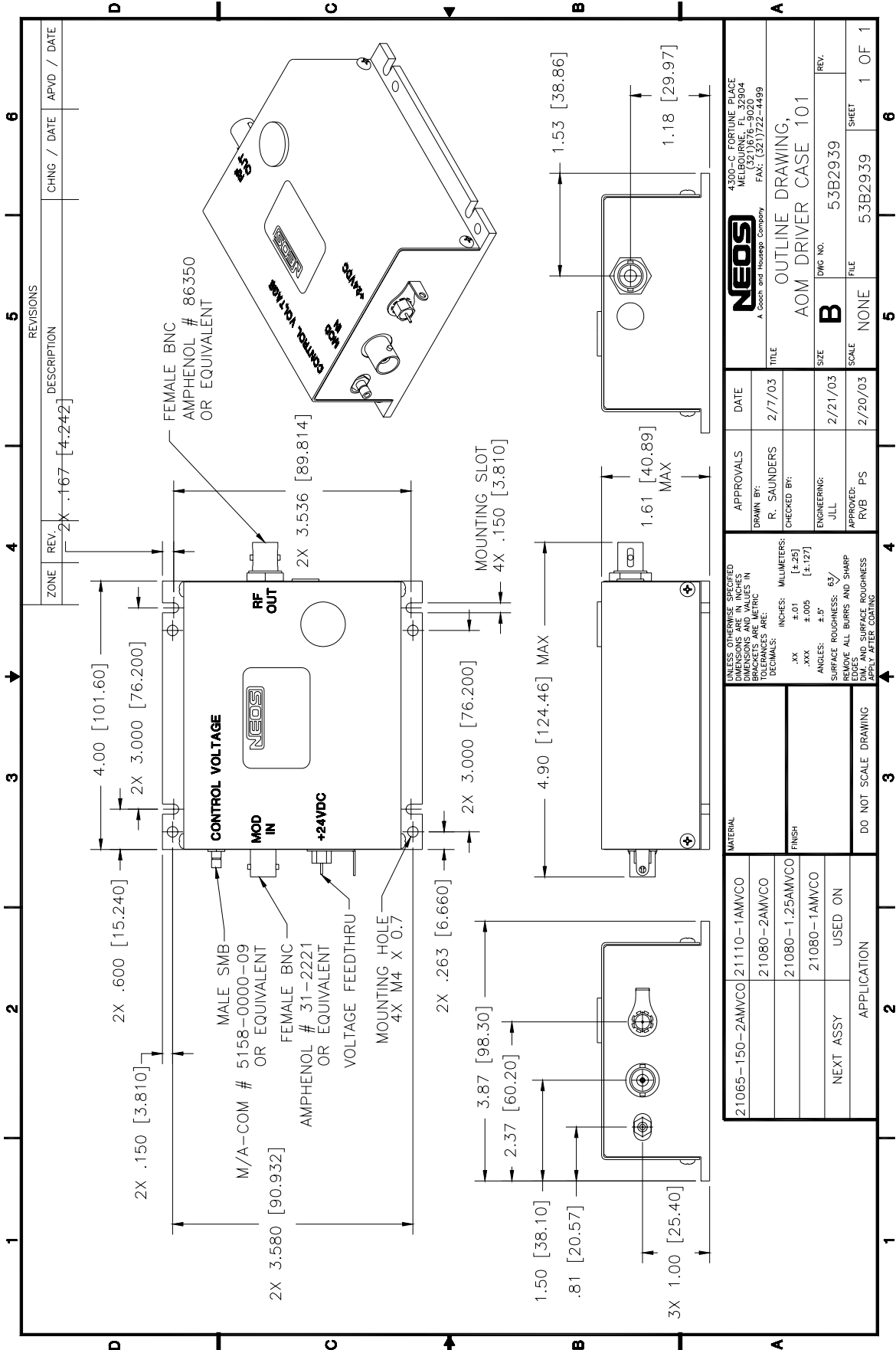
#### RELATED DOCUMENTS:

Outline Drawing: 53B2939

Manual: 56A18412

**For More Information, Contact:      neos@neostech.com      Ph. (321) 242-7818      Fax (321) 242-1019**

# OUTLINE DRAWING



ZONE	REV.	DESCRIPTION	CHNG / DATE	APVD / DATE
	2X	.167 [4.242]		

REVISIONS				
ZONE	REV.	DESCRIPTION	CHNG / DATE	APVD / DATE
	2X	.167 [4.242]		

<b>NEOS</b> A Good and Reliable Company 4300-C FORTUNE PLACE MELBOURNE, FL 32904 TEL: (321) 676-3020 FAX: (321) 722-4499		DATE: 2/7/03 APPROVALS: R. SAUNDERS DRAWN BY: R. SAUNDERS CHECKED BY: JLL ENGINEERING: JLL APPROVED: RVB	TITLE: OUTLINE DRAWING, AOM DRIVER CASE 101 SIZE: B DWG NO: 53B2939 SCALE: NONE SHEET: 1 OF 1
UNLESS OTHERWISE SPECIFIED DIMENSIONS ARE IN INCHES DIMENSIONS IN BRACKETS ARE METRIC TOLERANCES ARE: .XX ±.01 [±.25] .XXX ±.005 [±.127] ANGLES: 63° SURFACE ROUGHNESS: REMOVE ALL BURRS AND SHARP EDGES DIM. AND SURFACE ROUGHNESS APPLY AFTER COATING		MATERIAL: 21065-150-2AMVCO 21110-1AMVCO 21080-2AMVCO 21080-1.25AMVCO 21080-1AMVCO FINISH: USED ON NEXT ASSY DO NOT SCALE DRAWING	