

# NEOS TECHNOLOGIES

A Gooch & Housego Company

MODEL NUMBER:

## 21XXX-YYY-ZASVCO

### SPECIFICATIONS

Document Number: **56A17598A**

The 21XXX-YYY-ZASVCO is a variable frequency RF Driver with analog modulation input and a Z Watt output into a 50 Ohm load in a rack mountable box.

#### PARAMETER:

#### SPECIFICATION:

|                            |  |
|----------------------------|--|
| Output Frequency:          | <b>XXX to YYY MHz</b><br>Where XXX to YYY typically is less than an Octave bandwidth, with frequencies from 35 to 300 MHz .  |
| Spurious Levels:           | -45 dBc Maximum  |
| Harmonic Distortion:       | -15 dBc Maximum  |
| Frequency Control Voltage: | 2 to 15 Volts Typical  |
| Analog Input:              | $\pm 1$ Volt into 50 Ohms, 0 Volts = minimum RF output<br>1 Volt = Maximum RF output   |
| Extinction Ratio:          | 30 dB Minimum  |
| RF Rise / Fall Time        | 20 ns typical, 30 ns Maximum<br>$P_{RF}$ : 10 to 90 %  |
| RF Output Power:           | <b>Z Watts</b> - 1 TO 2 Watts Nominal - Adjustable<br>Factory set for optimum performance when paired with a NEOS AO Device. |
| Output Power Flatness:     | 1.5 dB Maximum   |
| Output Impedance:          | 50 Ohms Nominal  |
| Power Input:               | 90 to 240 VAC @ 50 / 60 Hz<br>Fused @ 1.5 Amps   |

#### MAXIMUM RATINGS:

|                   |                        |
|-------------------|------------------------|
| Supply Voltage:   | 264 VAC                |
| Power Output:     | No DC Feedback Allowed |
| Case Temperature: | + 45 <sup>0</sup> C    |

#### CONNECTORS & MECHANICAL:

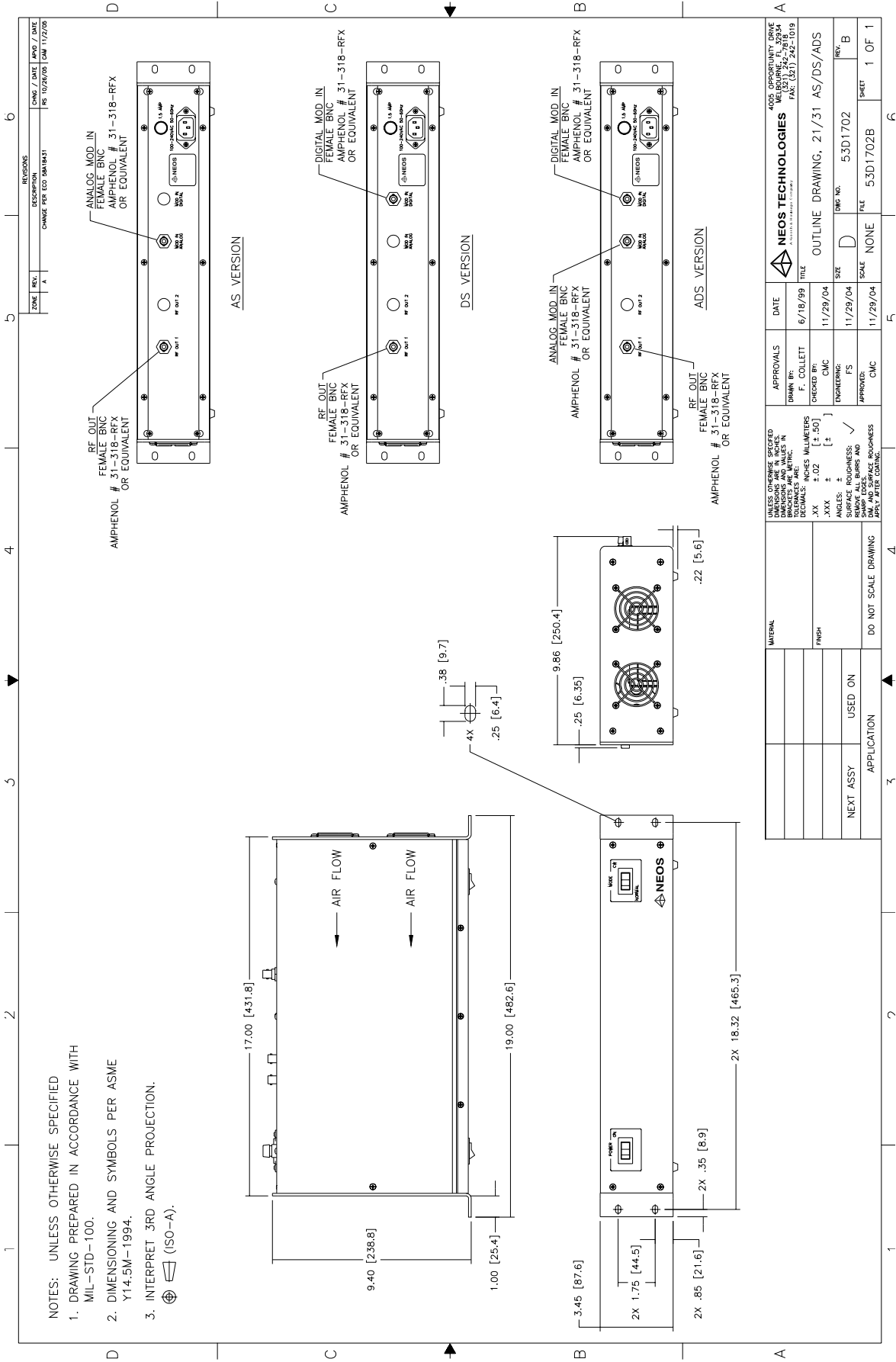
|                               |                                     |
|-------------------------------|-------------------------------------|
| RF Output Connector:          | BNC Female                          |
| Modulation Input Connector:   | BNC Female                          |
| Frequency Control Connection: | BNC Female                          |
| Power Supply Connections:     | 3 pin IEC panel mount EMI Filtered. |

#### RELATED DOCUMENTS:

|                  |         |
|------------------|---------|
| Outline Drawing: | 53D1702 |
|------------------|---------|

**For More Information, Contact:**      **neos@neostech.com**      **Ph. (321) 242-7818**      **Fax (321) 242-1019**

# OUTLINE DRAWING



- NOTES: UNLESS OTHERWISE SPECIFIED  
 1. DRAWING PREPARED IN ACCORDANCE WITH MIL-STD-100.  
 2. DIMENSIONING AND SYMBOLS PER ASME Y14.5M-1994.  
 3. INTERPRET 3RD ANGLE PROJECTION.

| ZONE | REV. | DESCRIPTION             | CHNG / DATE | APPR / DATE |
|------|------|-------------------------|-------------|-------------|
| A    |      | CHANGE PER ECO 58A18431 | RS 10/26/05 | DM 11/22/05 |

|             |            |   |          |
|-------------|------------|---|----------|
|             |            | 405E OPPORTUNITY DRIVE<br>MELBOURNE, FL 32934<br>TEL: (321) 242-1019<br>FAX: (321) 242-1019 |          |
| DATE        | 6/18/99    | APPROVALS   |          |
| DRAWN BY:   | F. COLLETT | ENGINEERING   |          |
| CHECKED BY: | CMC        | APPROVED:   | CMC      |
| DATE        | 11/29/04   | FILE  | 53D1702B |
| DATE        | 11/29/04   | SCALE   | NONE     |
| DATE        | 11/29/04   | SHEET   | 1 OF 1   |
| DATE        | 11/29/04   | REV.  | B        |