

NEOS TECHNOLOGIES

A Gooch & Housego Company

DEVICE SPECIFICATIONS

MODEL NUMBER:

26055-1-1.55-LTD-FO

DOCUMENT NUMBER: 56A15489D

<u>PARAMETER</u>	<u>SPECIFICATION</u>
Interactive Material	AMTIR
Acoustic Mode	Longitudinal
Operating Wavelength	1520 nm to 1570 nm 1570 to 1620 nm available
Window Configuration	AR Coated
Operating Frequency	55 MHz
CW Insertion Loss*	2.45 dB Maximum
Insertion Loss Stability	0.25 dB Maximum
Insertion Loss Variation CW to Modulated	0.125 dB
Back Reflection	-50 dB
On/Off Extinction Ratio	55 dB
Modulation Extinction Ratio (Modulation Frequency 125 KHz)	40 dB
Light Polarization	Random
Polarization Dependent Loss	0.15 dB nominal 0.2 dB Max.
Rise Time	100 ns Maximum
Rise Time Symmetry	15 %
AO Delay	1.35 μ s \pm 0.2 μ s
RF Power Level	< 0.5 Watt
Impedance	50 Ohms
Package:	53B0946
Connectors	FC/PC FC/APC optional
Fiber type:	Single mode 9/125 Fibers, 1 meter long Polarization maintaining, 8/125 optional
Recommended Drivers:	
Analog Driver System: 21055-0.4AS	Digital Driver System: 21055-0.4DS
Analog Driver Module: 21055-0.4AM	Digital Driver Module: 21055-0.4DM

* Not including loss at connector interfaces

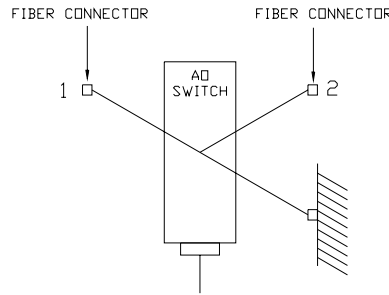
For More Information, Contact: neos@neostech.com Ph. (321) 242-7818 Fax (321) 242-1019

CONTROLS AND CONNECTIONS

BNC Connector:
FC/PC Connectors

RF Input 55 MHz @ < 0.5 Watt
X 2 port 1, 2

SCHEMATIC:

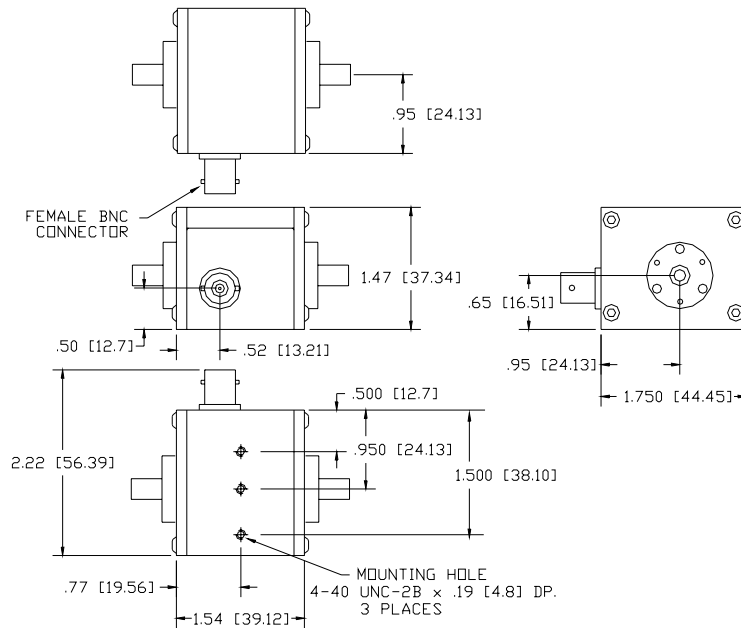
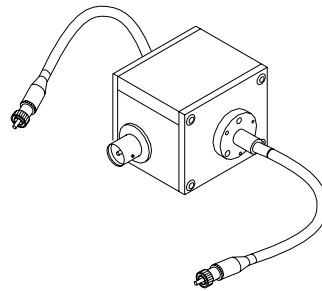


45A18371

LOGIC:

RF ON: Low loss path: port 1 to port 2, Light Frequency Shifted up by 55 MHz. for +1st order.
RF OFF: Maximum Extinction.

OUTLINE DRAWING:



Dimensions are in inches
Dimensions in [] are in mm.

Tolerances:

Decimal: .xx = .01 .xxx = .005
Millimeter: .xx = .25mm .xxx = .127mm
Angle: = ± 30'

53B0946