

**NEOS TECHNOLOGIES**

A Gooch & Housego Company

OPERATING MANUAL

**POLYCHROMATIC ACOUSTO-OPTIC MODULATOR  
FOUR CHANNEL RF DRIVER  
FOR THE 48062 PCAOM**

MODEL NUMBER:

**64040-75-.1-4CH-5**

**DOCUMENT NUMBER: 51A10371B**

Document approved for release: W Seale      Date: 7/14/05

US OFFICE: NEOS Technologies, Inc. ♦ 4005 Opportunity Drive ♦ Melbourne, FL 32934 ♦ USA  
Tel: (321) 242-7818 ♦ Fax: (321) 242-1019 ♦ Email: [neos@neostech.com](mailto:neos@neostech.com)

UK OFFICE: Gooch & Housego ♦ The Old Magistrates Court ♦ Ilminster, Somerset TA19 0AB ♦ UK  
Tel: +44 1460 52271 ♦ Fax: +44 1460 54972 ♦ Email: [sales@goochandhousego.com](mailto:sales@goochandhousego.com)

## TABLE OF CONTENTS

Section	Description	Page
I.	INSPECTION PROCEDURE	3
II.	DESCRIPTION	4
III.	SPECIFICATIONS	5
IV.	OUTLINE DRAWING	6
	PINOUT	7
V.	CONTROLS AND CONNECTIONS	8
VI.	OPERATING PROCEDURES	9

**SECTION I**  
**INSPECTION PROCEDURE**

Examine the shipping carton for damage. If the shipping carton or packing material is damaged it should be kept for the carrier's inspection. Check the contents of the shipment for completeness, mechanical damage, and then test the equipment electronically. Operating procedures are contained in Section VI. Notify the carrier and NEOS Technologies. If the contents are incomplete, or the equipment does not pass the electrical testing please notify NEOS Technologies.

If there is any problem with the use of this equipment or the equipment fails to function as expected, contact NEOS Technologies. Do not try to trouble shoot or repair this equipment. Contact NEOS Technologies, Inc for a Return Authorization Number.

## **SECTION II**

### **DESCRIPTION**

The PCAOM driver generates the precise RF frequency to select the proper laser wavelength out of the visible light spectrum. The driver has four channels combined into one output. Each channel is factory set to cover the common laser wavelengths in the visible spectrum. Channel one has the capability of being switched between two different wavelengths with the push of a button. The standard configuration of wavelengths is as follows: Channel 1 – 647 nm or 632 nm, Channel 2 – 514 nm, Channel 3 – 488 nm, and Channel 4 – 476 nm. If requested NEOS, will set the wavelengths as specified on a custom basis.

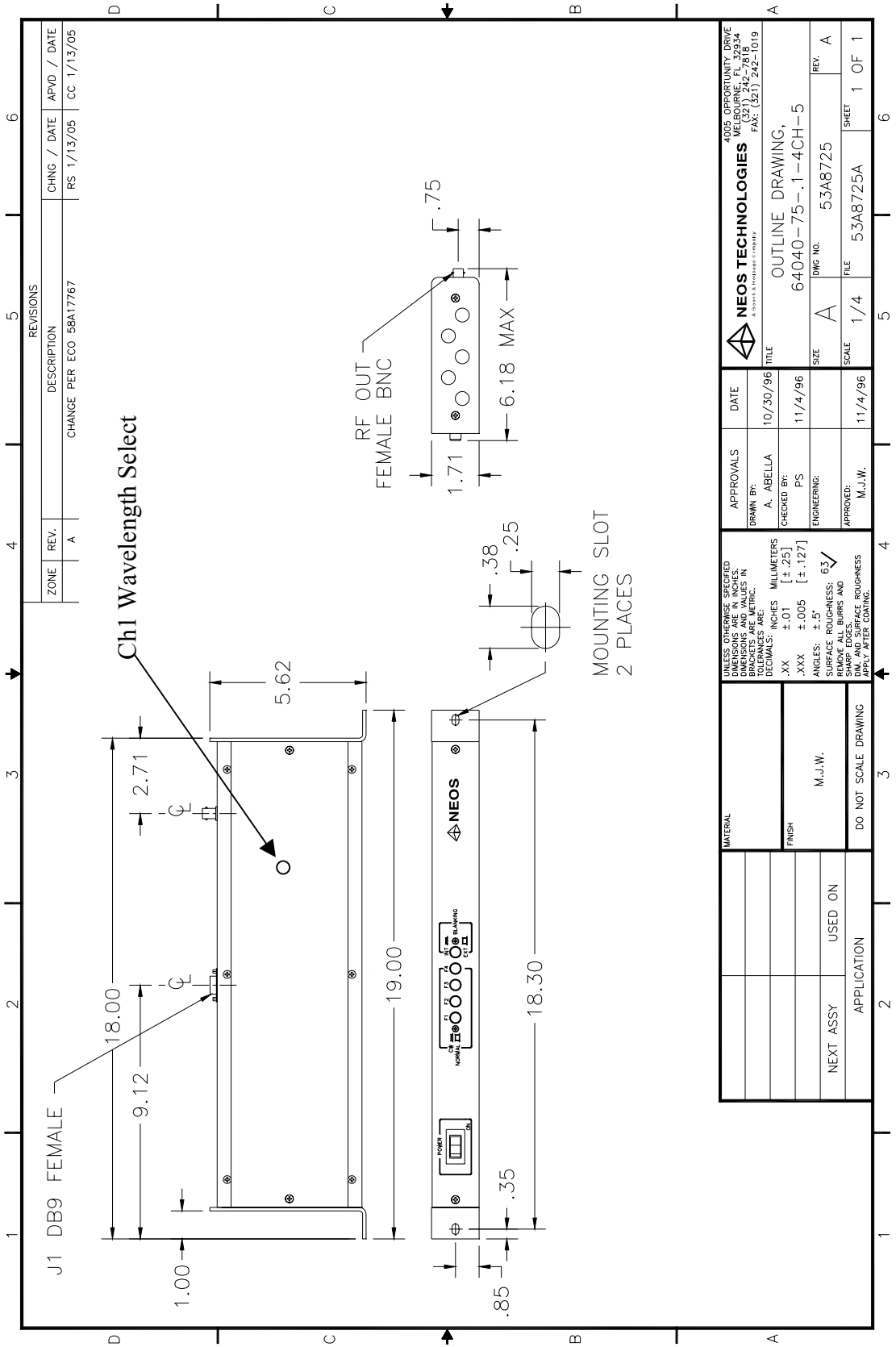
The extinction ratio must be high for most applications. There are two ports for modulation on each channel: an AM (analog modulation) port and a TTL blanking port. The TTL modulation extinction ratio is  $> 60\text{dB}$ . The TTL port turns off the RF output when a TTL low is applied. The analog modulation has an extinction ratio of  $> 60\text{ dB}$ . The analog port requires a 0 to 5 Volts input. The analog port and the TTL blanking input impedance is high, therefore, the driver can be easily driven from existing pc boards. The rise/fall time of the driver is 200 nanoseconds. For a 2.0 mm beam in the PCAOM, the system will support a modulation rate greater than 100 KHz. The driver generates all RF signals by using crystal oscillators. The frequency is factory set and cannot be adjusted.

The system comes in a 1.71" x 6.18" x 19" rack mounted box and has a set of four push button CW / Normal switches to allow for testing when a computer or other modulating source is not available. The output power (factory set) can be easily adjusted. Each channel has a trimpot with a range adjustment of 40 to 200 mW accessible inside on the module. The channel 1 wavelength select button is accessible through a hole in the cover. The pin outs for the D connector are silk screened on the housing (Refer to figure for pin out).

**SECTION III**  
**SPECIFICATIONS**

<b><u>PARAMETER</u></b>	<b><u>SPECIFICATION</u></b>
Number of Channels	Four
Frequency Stability	±0.01%
Power Out	40-200 mW / Channel
Wavelengths	CH 1 647 nm or 632 nm
*CH 1 wavelength selectable by switch	CH 2 514 nm CH 3 488 nm CH 4 476 nm
Analog Inputs (4)	0 - 5 Volts into 6K Ohms
Blanking Inputs (4)	TTL, 4.7 K Ohms, no input or high is not blanked
Rise/Fall Time	200 ns typical
Extinction Ratio	Analog > 60 dB TTL > 60 dB
Power	100 – 240 VAC 50 – 60 Hz 1.5 Amps
Connectors:	
RF out:	BNC Female
Data in:	9 Pin D-Sub female
Outline Drawing	53A8725

# SECTION IV OUTLINE DRAWING

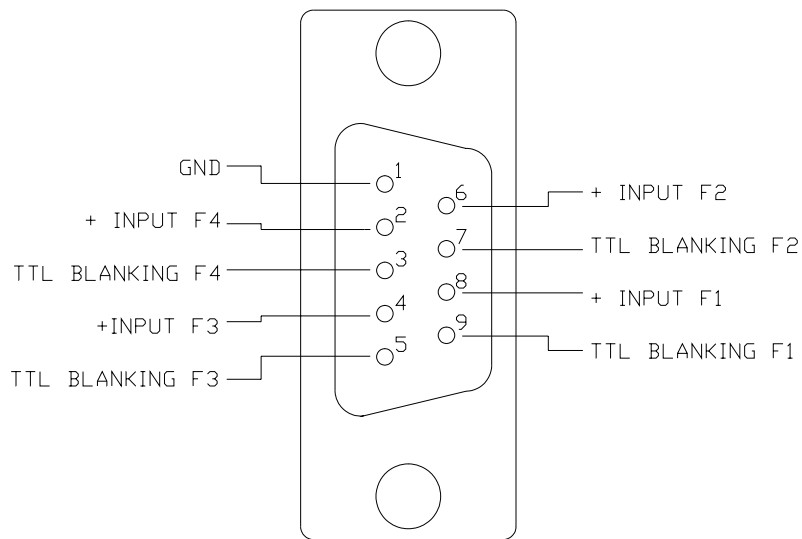


ZONE	REV.	DESCRIPTION	CHNG / DATE	APVD / DATE
	A	CHANGE PER ECO 58A17767	RS 1/13/05	CC 1/13/05

REVISIONS	
CHNG / DATE	APVD / DATE
RS 1/13/05	CC 1/13/05

<b>NEOS TECHNOLOGIES</b> <small>A Division of TheRadco Company</small> 1008 OPPORTUNITY DRIVE MELBOURNE, FL 32954 TEL: (321) 242-7818 FAX: (321) 242-1019	
APPROVALS DRAWN BY: A. ABELLA CHECKED BY: PS ENGINEERING: APPROVED: M.J.W.	DATE 10/30/96 11/4/96 11/4/96
UNLESS OTHERWISE SPECIFIED DIMENSIONS ARE IN INCHES DIMENSIONS AND VALUES IN PARENTHESES ARE METRIC. TOLERANCES ARE: XX ±.01 [±.25] XXX ±.005 [±.127] ANGLES: ±5° SURFACE FINISHES: 63 REMOVE ALL BURRS AND SHARP EDGES. ALL SURFACE ROUGHNESS VALUES ARE PER ASME B46.1.	TITLE OUTLINE DRAWING, 64040-75-.1-4CH-5 SIZE A DWG NO. 53A8725 REV. A
MATERIAL FINISH M.J.W. DO NOT SCALE DRAWING	APPLICATION USED ON NEXT ASSY
SHEET 1 OF 1 SCALE 1/4 FILE 53A8725A	

PINOUT J1 DB9 FEMALE  
N64040-75-1-4CH-5



45A8729

**Figure 1**

**SECTION V**  
**CONNECTION AND CONTROLS**

A. Controls

**Push Buttons (F1-F4)** - Turn on selected channel, disables computer input.

**Blanking Push Button** - Selects the blanking mode:

(1) Internal (INT) - when the AM signal is less than 750mV DC, the blanking is automatically engaged, no external blanking is required.

(2) External - A TTL low (< 0.8 VDC) on the blanking input blanks the selected wavelength.

**Channel 1 Select Push Button** – Inside on module.

Up selects 647 nm. Down selects 632 nm. (LED on)

**Channel Power Adjustment Pots** - Inside on module.

B. Inputs/Outputs: **J1** (figure 1)

**Blanking Modulation Inputs (4X)**- This input accepts TTL level signals and modulates the carrier. When a TTL high is input to this port there is no blanking for the selected wavelength. When a TTL low is input the selected wavelength is blanked.

**AM Inputs (4X)** - 0 to 5 Volts single ended input with 6K $\Omega$  input impedance.

## SECTION VI

### OPERATING PROCEDURE

#### C. Testing Procedure:

1. Before applying power connect the RF output to a load capable of dissipating 1 Watt or connect to a "good" PCAOM.
2. Apply 100-240VAC to the back panel and turn on the power switch.
3. Input proper modulation signal into driver or push the proper button on the front panel, then measure power and frequency for each channel or measure light for each wavelength and diffraction efficiency.
4. The unit is operating if 40 to 200 mW are output at the correct frequency from each channel. See the acceptance test report for this unit for frequency for each channel.

#### Operating Procedure:

1. Attach the PCAOM to the RF output of the driver with a 50 Ohm cable.
2. Apply 100-240VAC to the back panel and turn on the power switch.
3. Input proper modulation signal into driver or push the proper button (ch3) on the front panel so as to select the 488 nm wavelength.
4. Align the **48062** PCAOM to the laser beam (Horizontal Polarization Required) and adjust the Bragg angle to output maximum diffraction efficiency into the + First order beam (away from the connector).
5. Deselect the 488 nm wavelength.
6. Without readjusting the Bragg angle, select each of the four wavelengths, one at a time, and adjust the power adjustment for each wavelength for maximum diffraction efficiency.
6. Apply the appropriate control signals to select the desired wavelengths and effects.